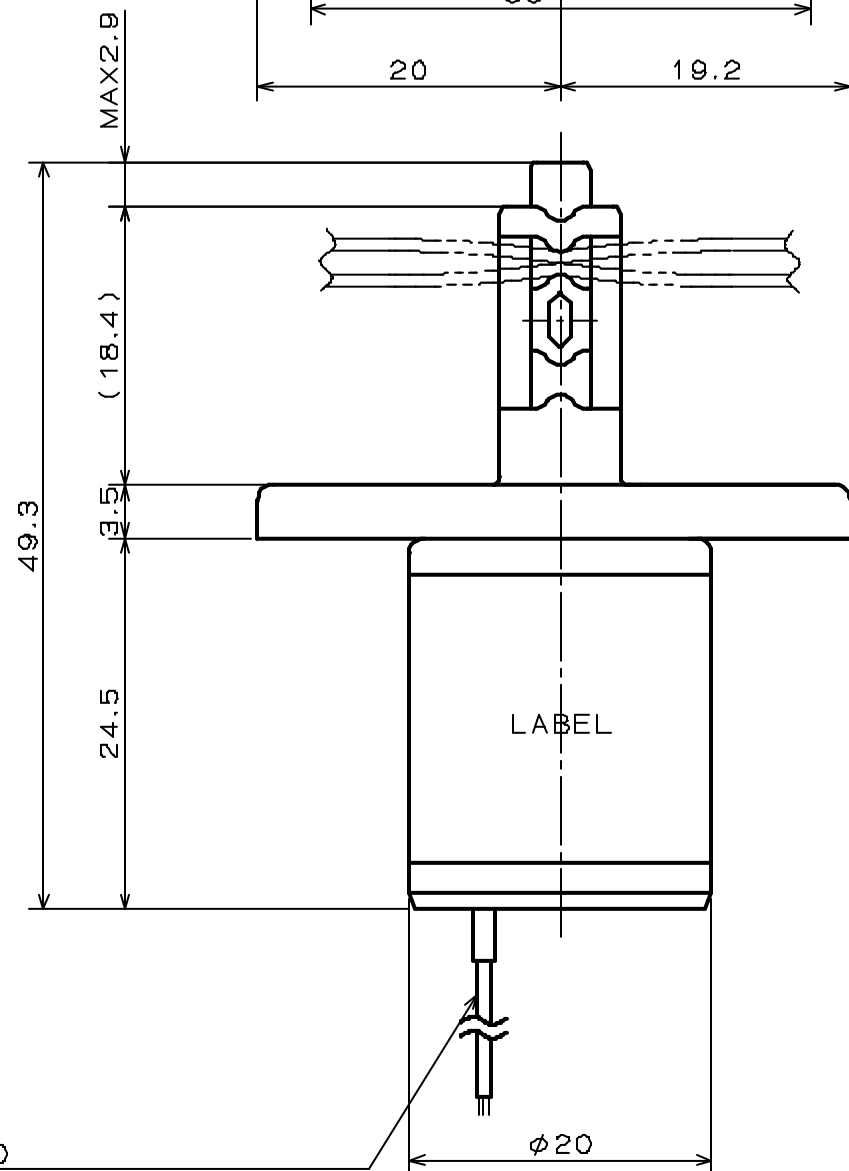
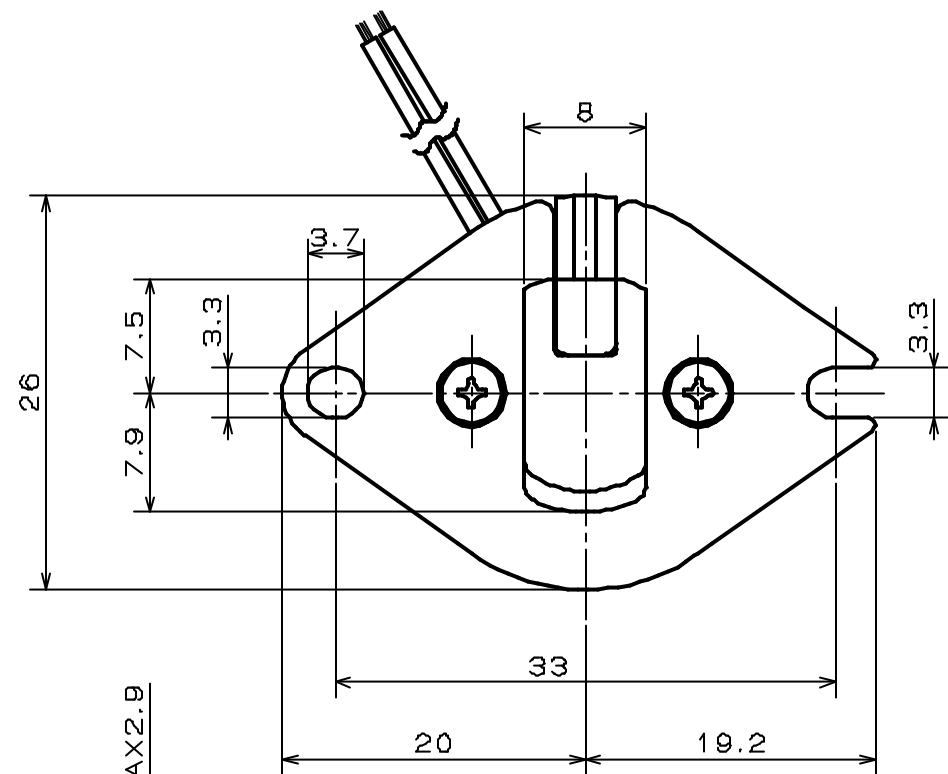


FOR REFERENCE ONLY



PINCH VALVE

SPECIFICATIONS for MODEL PS-1615NC

- TYPE : NORMALLY CLOSED
- TUBE DIAMETER : I.D. 1.6mm, O.D. 3.2mm
- TUBE MATERIAL : SILICONE
- OPERATING PRESSURE RANGE : 0 ~ 150kPa
{0 ~ 1.5bar}
- AMBIENT TEMPERATURE RANGE : 0 ~ 40°C
- RATED VOLTAGE : 12VDC, 24VDC
- POWER CONSUMPTION : 3W
- DUTY CYCLE : CONTINUOUS
- DIELECTRIC STRENGTH : 1500VAC FOR 60s

φ0.2xL350
LEADS: IRRAX CORTED(24VDC)
ETFE CORTED(12VDC)

△								
△								
△	03-12-18	PINCHING HEAD MATERIAL CHANGED FROM PBT TO T-M		PINCHING HEAD	PBT	1		
SYM.	DATE	DESCRIPTION		TUBE HOLDER	POM	1		
REVISION			PART NO.	PART NAME	MATERIAL	REQD.	NOTE	
SCALE	APPROVED	CHECKED	DRAWN	PINCH VALVE PS-1615NC			DRAWING NO 02013-00-S	
2/1								
A 3								